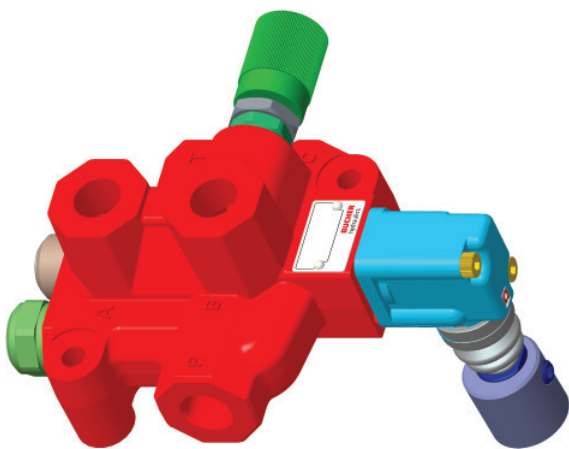
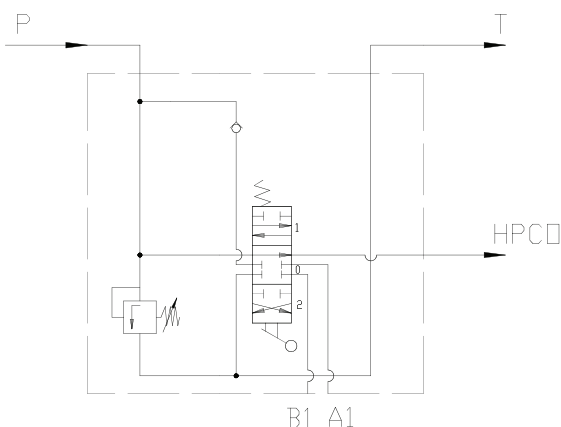


Providing your Low Cost Solution for High Pressure Carry Over (HPCO)

Our HDM141 Monoblock Directional Valve uses existing components from our HDM140, offering the same low cost, the same high performance and reliability, but now answers to the Power Beyond applications.



Schematic



- The HDM141 is a lighter Monoblock design than the current Power Beyond Monoblock option (HDM11S/1), saving costs while maintaining the same high performance level
- Maximum flow rate of 45 l/m (12 gpm) and Maximum operating pressure 250 bar (3600 PSI)
- Balanced interchangeable spools provide minimum leakage and smooth reliable operation
- Open or Closed Center Positions Available including 3 or 4 Position (Float), Full Open Center (Motor Spool), and others
- Ideal in mobile applications such as Agriculture Machinery, Construction Equipment and Recovery Vehicles

Why choose Power Beyond?

High Pressure Carry Over (HPCO), also known as Power Beyond allows operation of multiple directional valves from one single pump. Mobile applications can operate multiple functions without multiple pumps. By adding a Power Beyond source, such as the HDM141, excess components are eliminated, saving overall cost.