



Post Office Box 97
 Benton Harbor, Michigan
 Ph: 269/926-6171
 Fax: 269/925-6286

PART NUMBER: STD103
 REVISION: G

Product Specifications

Model Number	MAX. PRESS.		MAX. SPEED	HP	kW	Net Wt.	
	bar.	PSI				lbs.	kg
1AM-NRV-82	7.0	100	10,000 RPM	.42	0.30	2	0.9
1AM-NCC-59A	7.0	100	10,000 RPM	.42	0.30	2	0.9
1AM-NCC-59B	7.0	100	10,000 RPM	.42	0.30	2	0.9

SOUND LEVEL 78 dba MAX.

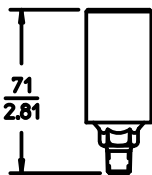
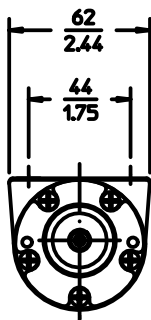
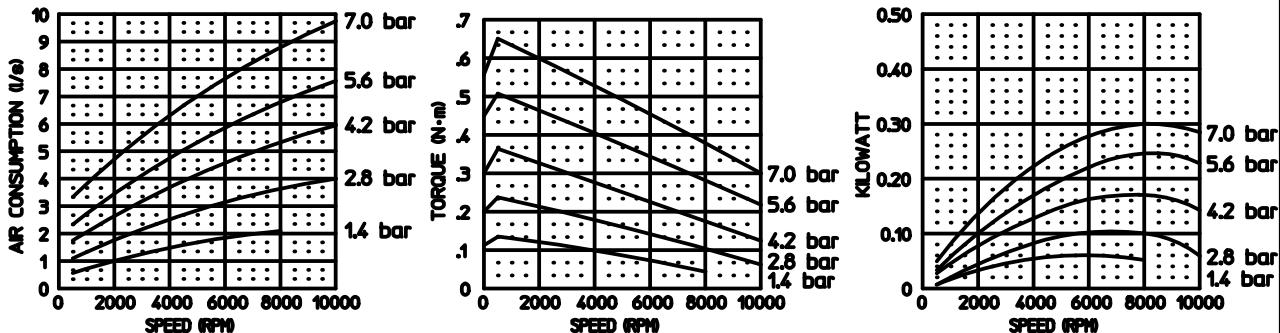
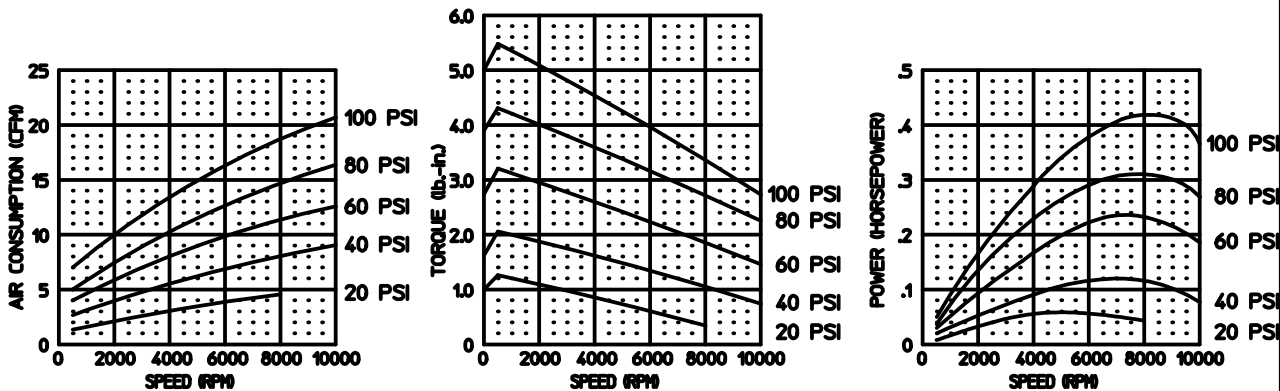
NORMAL AMBIENT 1° C. - 120° C.

RELATIVE HUMIDITY 0% - 100%

ENVIRONMENT HAZARDOUS AMBIENT COMBUSTIBLE
 GAS AND DUST +1C TO +40C

* TECHNICAL DATA SUBJECT TO CHANGE
 WITHOUT NOTICE.

CONFORMS TO EUROPEAN STANDARD EN13463-1 NON-ELECTRICAL
 EQUIPMENT FOR EXPLOSIVE ATMOSPHERES GROUP II CAT. 2
 (GAS AND DUST) PROTECTED BY CONSTRUCTION (SURFACE TEMP. RATED 135C)



MUFFLER ASM.
 (UNATTACHED)
 1AM-NCC-59A
 EXCLUDED

