

General Description

The CPD084P is a single cartridge, Double Pilot Operated Check Valve. It is used in load holding operations. When using the valve in conjunction with a directional control valve, always use a spool configuration that has an open flow path from the work ports to the tank.

Operation

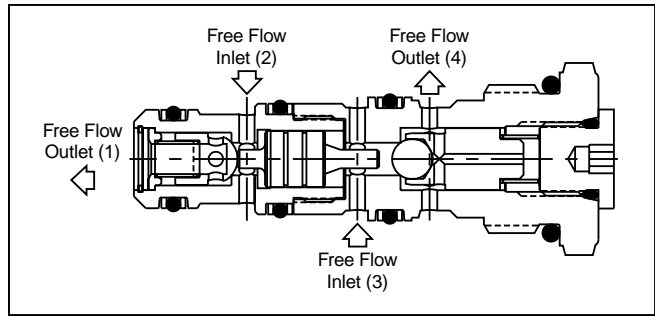
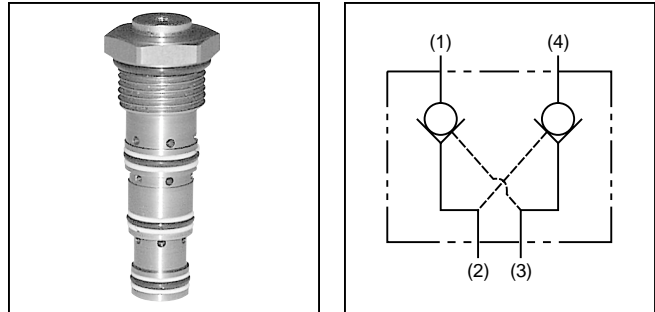
In the absence of flow and pressure on the free flow inlet ports, the load is held locked into position by the two check valves. The valve allows an actuator to be powered into motion by permitting free flow from the actuator through the opposite check, which is internally piloted, open by the internal shuttle.

Features

- Hardened, precision ground parts for long life
- Cost effective - replaces two cartridges
- High flow capacity with reduced space requirements
- Low leakage design
- Fully guided poppet for smooth operation
- Standard valve body and common cavity

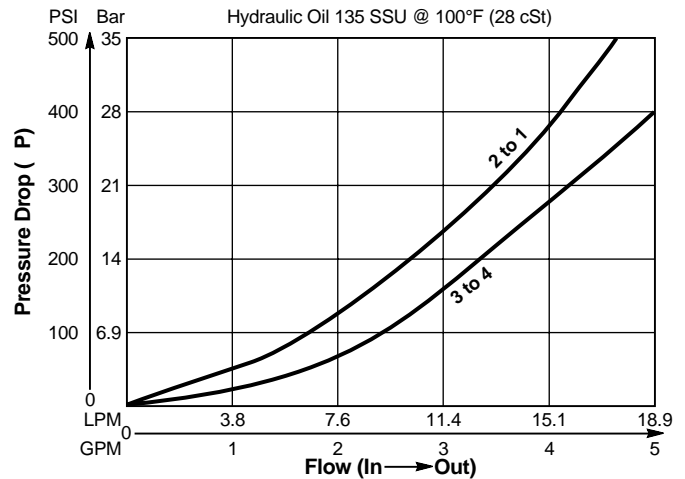
Specifications

Maximum Flow	18.75 LPM (5 GPM)
Max. Operating Pressure	210 Bar (3000 PSI)
Max. Leakage at Rated Pressure	0.25 cc/min. (5 drops/min.)
Operating Temp. Range (Ambient)	-40°C to +93.3°C (Nitrile) (-40°F to +200°F) -31.7°C to +121.1°C (Fluorocarbon) (-25°F to +250°F)
Cartridge Material	All parts steel. All operating parts hardened steel.
Body Material	Aluminum only
Filtration	ISO code 16/13, SAE Class 4 or better
Mounting	No Restrictions
Cavity	Common Cavity No. C08-4



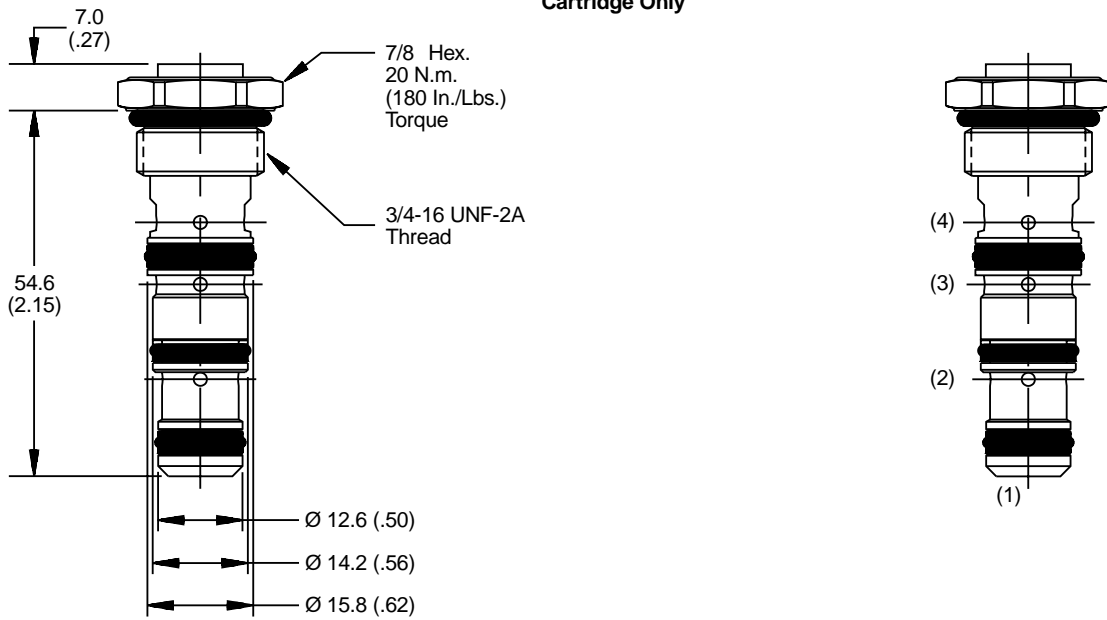
Performance Curve

Flow vs. Pressure Drop
 (Through cartridge only)

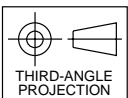
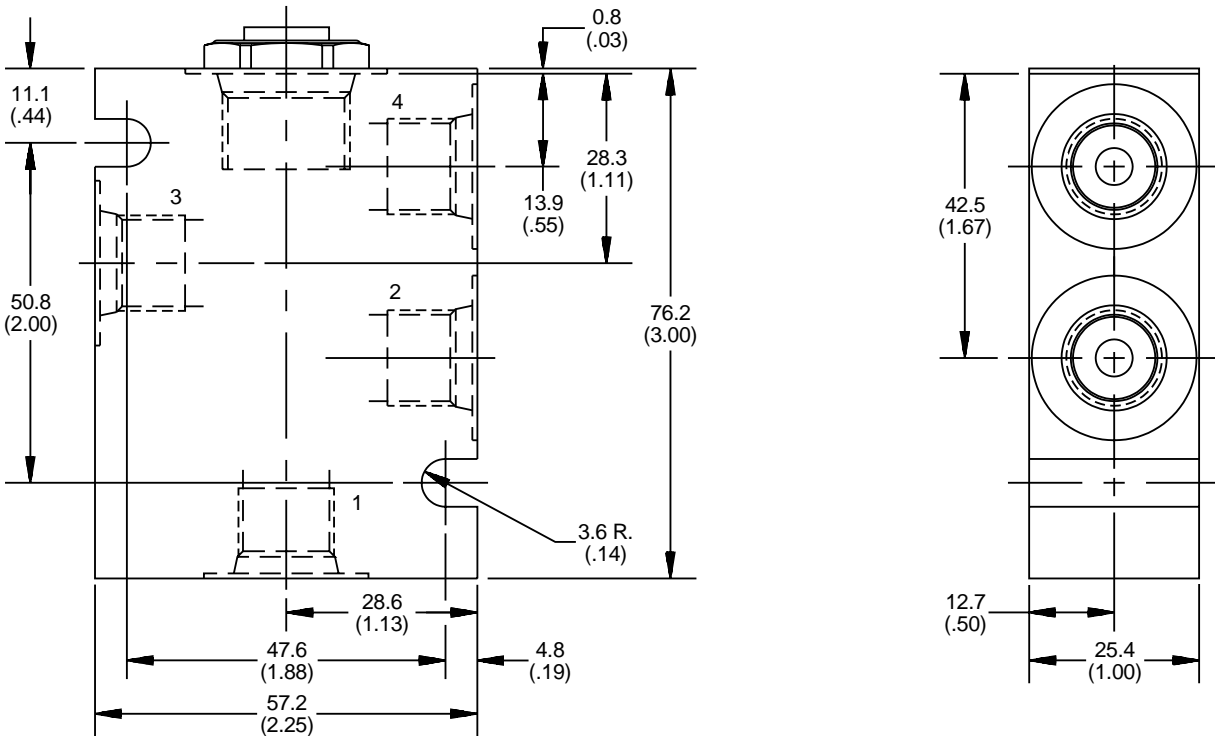


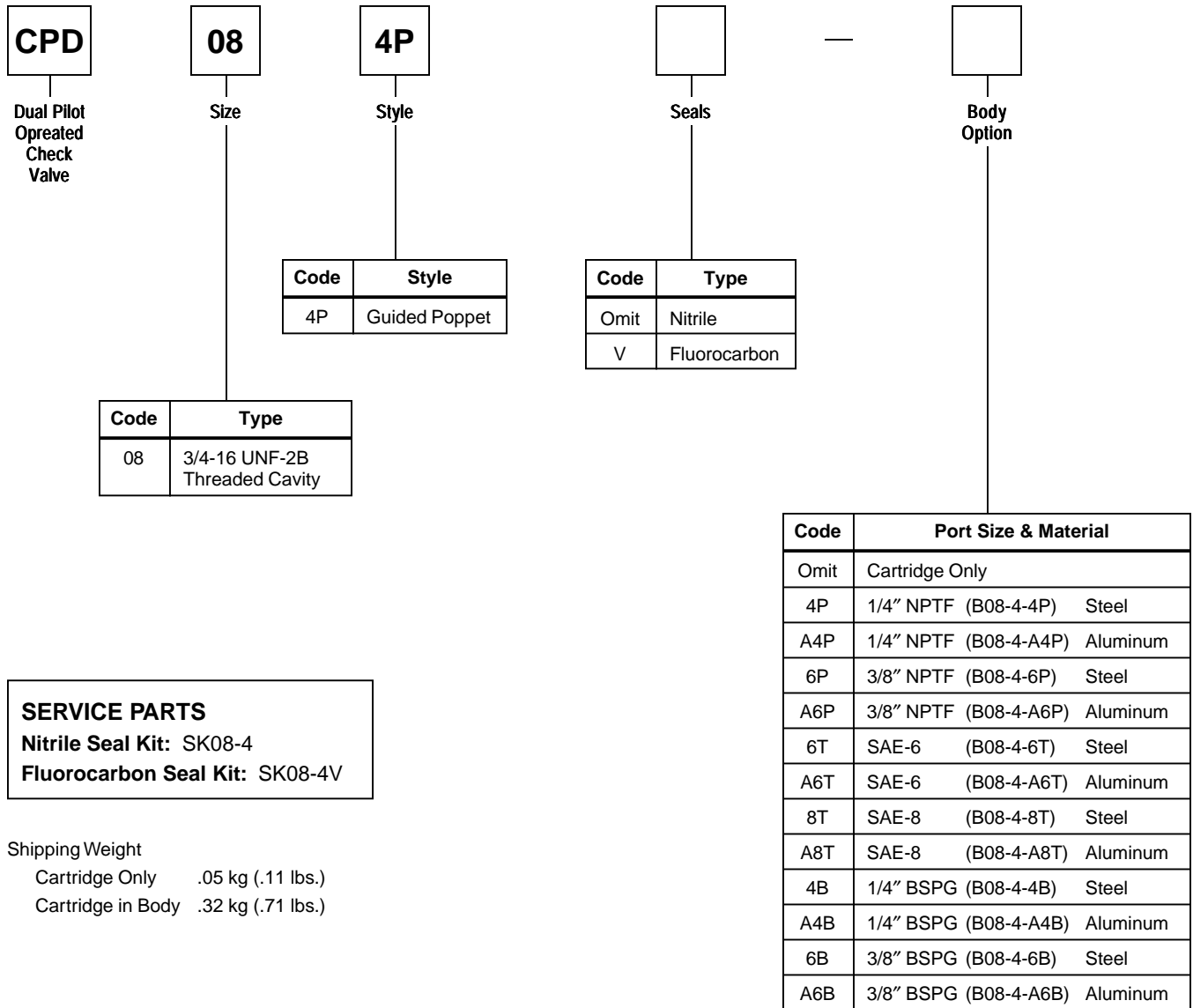
*Inch equivalents for millimeter dimensions are shown in (**)

Cartridge Only



Cartridge In Body





SERVICE PARTS
Nitrile Seal Kit: SK08-4
Fluorocarbon Seal Kit: SK08-4V

Shipping Weight
 Cartridge Only .05 kg (.11 lbs.)
 Cartridge in Body .32 kg (.71 lbs.)