

**General Description**

The CPH104P Series Single P.O. Check Valve will positively lock an actuator or permit flow to a portion of a circuit and not allow reverse flow until adequate pilot pressure is applied to the pilot port.

**Operation**

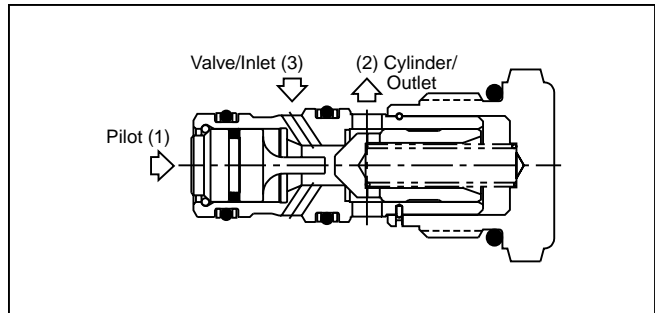
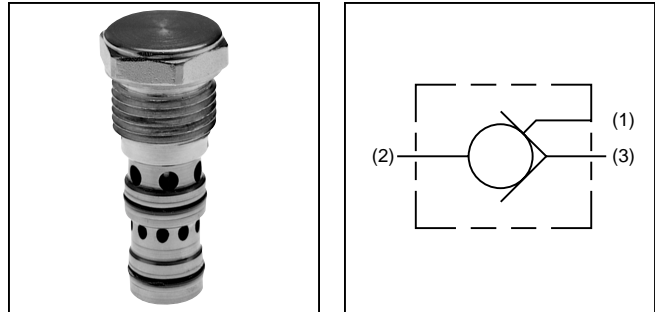
Free flow is permitted from the valve port (3) to the cylinder port (2). In the absence of adequate pilot pressure, the poppet remains seated preventing reverse flow. When adequate pilot pressure is applied at the pilot port (1), the pilot piston unseats the check poppet permitting reverse flow.

**Features**

- Hardened, precision ground parts for durability
- Internal pilot piston

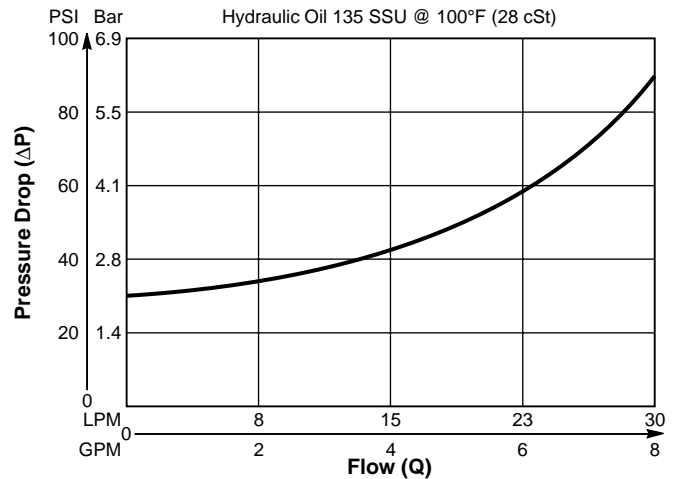
**Specifications**

|  |  |
|--|--|
| <b>Maximum Flow</b>                    | 30 LPM (8 GPM)   |
| <b>Maximum Inlet Pressure</b>          | 340 Bar (5000 PSI) - Steel<br>210 Bar (3000 PSI) - Aluminum  |
| <b>Leakage</b>                         | 5 drops/min. (1/3 cc/min.)<br>at 340 Bar (5000 PSI)  |
| <b>Pilot Ratio</b>                     | 3:1  |
| <b>Operating Temp. Range (Ambient)</b> | -40°C to +93.3°C (Nitrile)<br>(-40°F to +200°F)<br>-31.7°C to +121.1°C (Fluorocarbon)<br>(-25°F to +250°F) |
| <b>Cartridge Material</b>              | All parts steel. All operating parts hardened steel.   |
| <b>Body Material</b>                   | Steel or Aluminum  |
| <b>Filtration</b>                      | ISO code 16/13,<br>SAE Class 4 or better   |
| <b>Mounting</b>                        | No Restrictions  |
| <b>Cavity</b>                          | Common Cavity No. C10-3  |



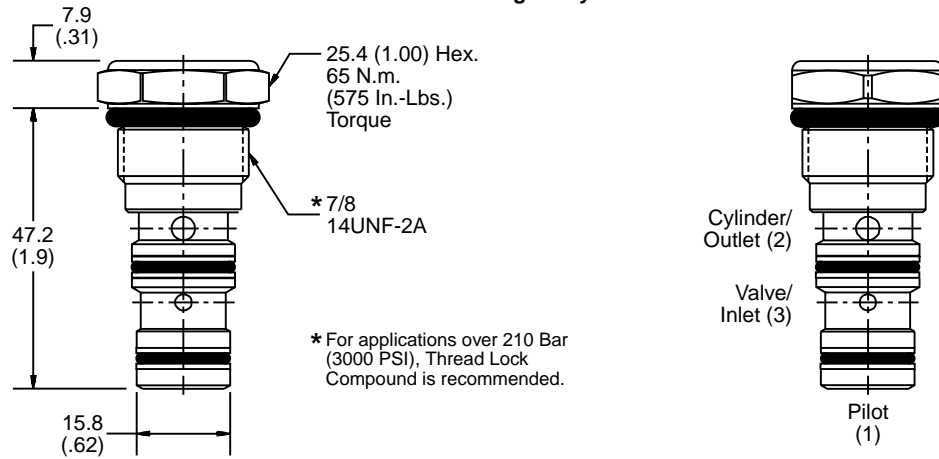
**Performance Curve**

**Pressure Drop vs. Flow**  
 (Through cartridge only)

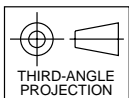
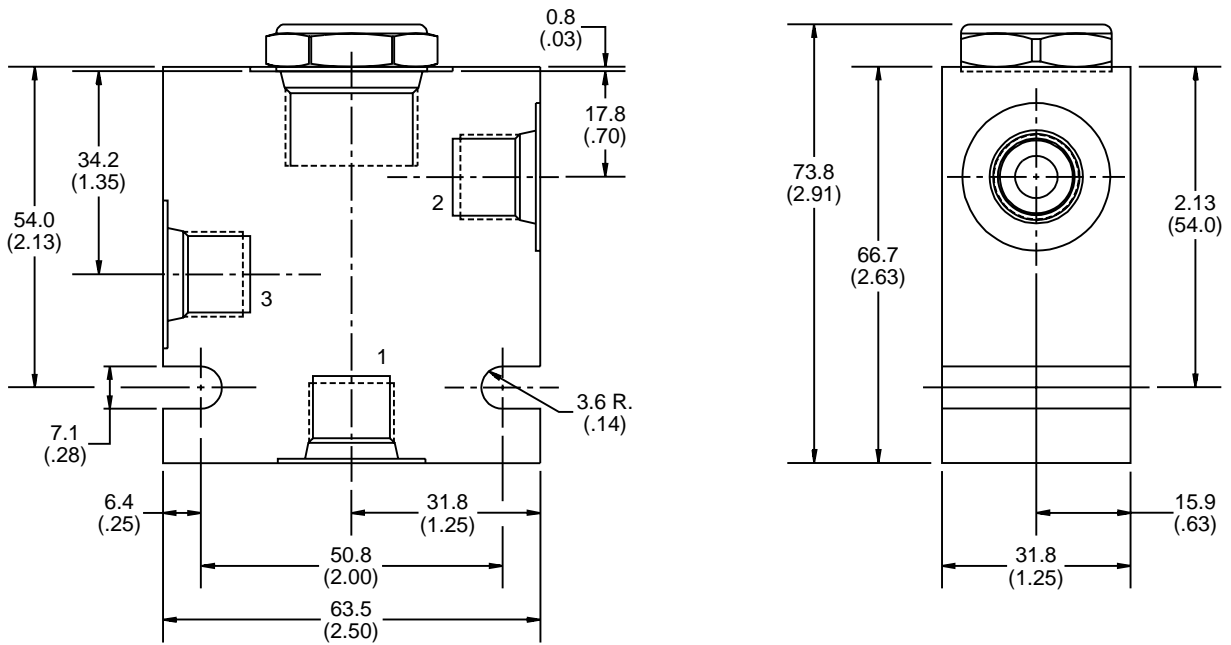


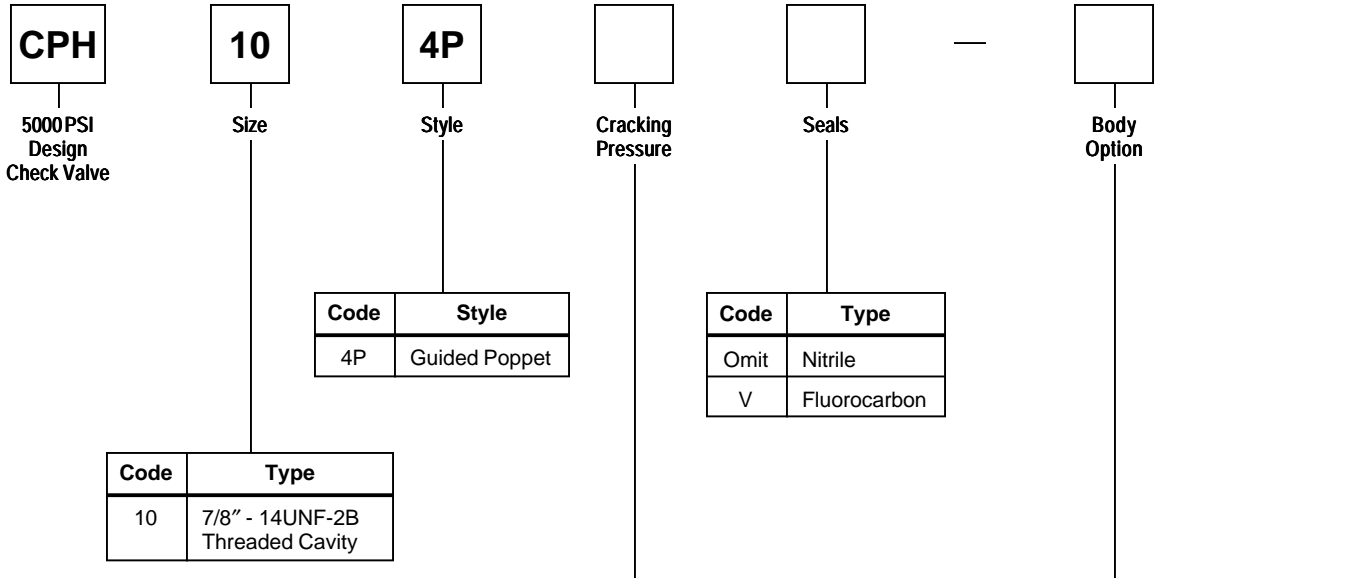
\*Inch equivalents for millimeter dimensions are shown in (\*\*)

**Cartridge Only**



**Cartridge In Body**





| Code | Type             |
|------|------------------|
| Omit | 2.1 Bar (31 PSI) |

| Code | Port Size & Material           |
|------|--------------------------------|
| Omit | Cartridge Only                 |
| 4P   | 1/4" NPTF (B10-3-4P) Steel     |
| A4P  | 1/4" NPTF (B10-3-A4P) Aluminum |
| 6P   | 3/8" NPTF (B10-3-6P) Steel     |
| A6P  | 3/8" NPTF (B10-3-A6P) Aluminum |
| 8P   | 1/2" NPTF (B10-3-8P) Steel     |
| A8P  | 1/2" NPTF (B10-3-A8P) Aluminum |
| 6T   | SAE-6 (B10-3-6T) Steel         |
| A6T  | SAE-6 (B10-3-A6T) Aluminum     |
| 8T   | SAE-8 (B10-3-8T) Steel         |
| A8T  | SAE-8 (B10-3-A8T) Aluminum     |
| 4B   | 1/4" BSPG (B10-3-4B) Steel     |
| A4B  | 1/4" BSPG (B10-3-A4B) Aluminum |
| 6B   | 3/8" BSPG (B10-3-6B) Steel     |
| A6B  | 3/8" BSPG (B10-3-A6B) Aluminum |
| 8B   | 1/2" BSPG (B10-3-8B) Steel     |
| A8B  | 1/2" BSPG (B10-3-A8B) Aluminum |

**SERVICE PARTS**  
**Nitrile Seal Kit: SK10-3**  
**Fluorocarbon Seal Kit: SK10-3V**

Shipping Weight  
 Cartridge Only .09 kg (0.2 lbs.)  
 Cartridge in Body .86 kg (1.9 lbs.)

**NOTE:**  
**If system pressure does not exceed 210 Bar (3000 PSI), aluminum bodies can be used. Higher pressures require steel bodies.**