

General Description

The CVH081P and CVH091P Series, Poppet-Type, Check Valves allow free flow in one direction while preventing flow in the reverse direction. They can be used to isolate portions of a hydraulic circuit or to provide a free flow path around a restrictive valve.

Operation

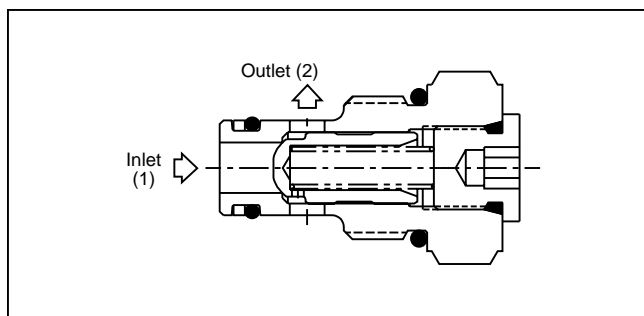
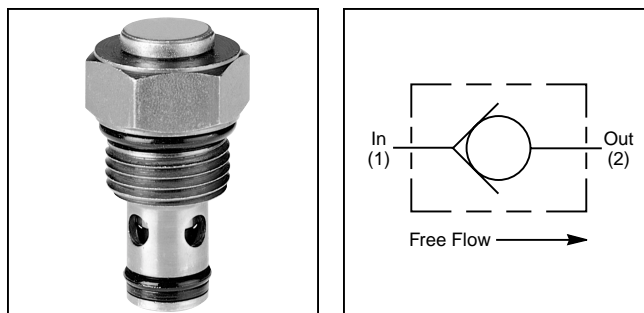
Pressure on the inlet of the check creates a force against the poppet, pushing it off its seat and permitting free flow. Reverse flow through the check is blocked by the poppet.

Features

- Hardened, precision ground parts for durability
- Compact size for reduced space requirements
- Low leakage design
- Fully guided poppet for smooth operation

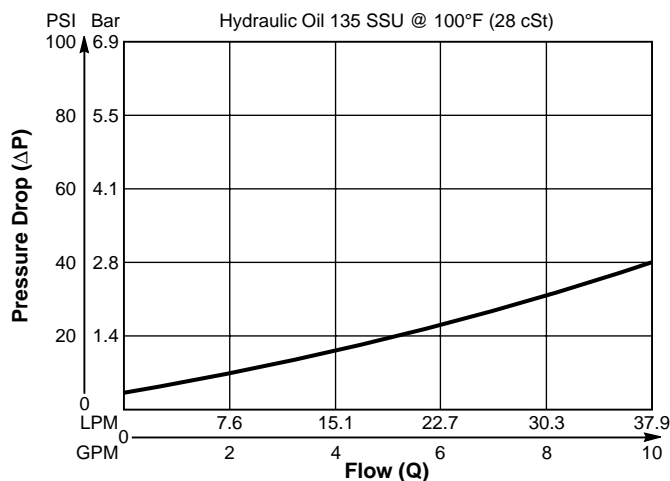
Specifications

Maximum Flow		38 LPM (10 GPM)
Maximum Inlet Pressure		210 Bar (3000 PSI) - Steel 210 Bar (3000 PSI) - Aluminum
Leakage		5 drops/min. (1/3 cc/min.) at 345 Bar (5000 PSI)
Operating Temp. Range (Ambient)		-40°C to +93.3°C (Nitrile) (-40°F to +200°F) -31.7°C to +121.1°C (Fluorocarbon) (-25°F to +250°F)
Cartridge Material		All parts steel. All operating parts hardened steel.
Body Material		Steel or Aluminum
Filtration		ISO code 16/13, SAE Class 4 or better
Mounting		No Restrictions
Cavity	CVH081P	Common Cavity No. C08-2
	CVH091P	Common Cavity No. C09-2



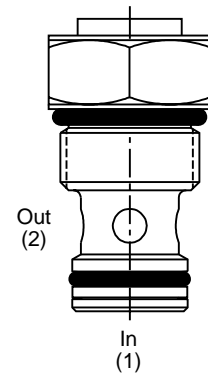
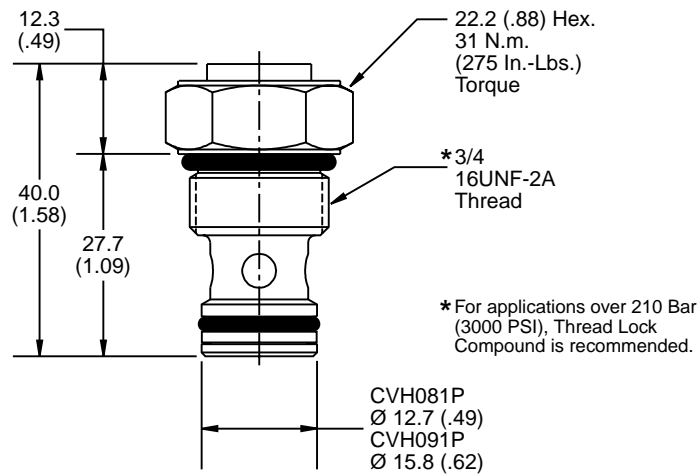
Performance Curve

Flow vs. Pressure Drop
(Through cartridge only)

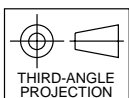
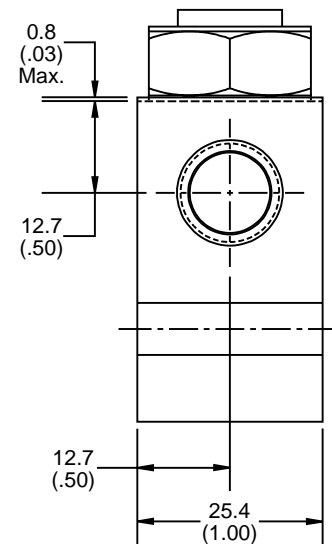
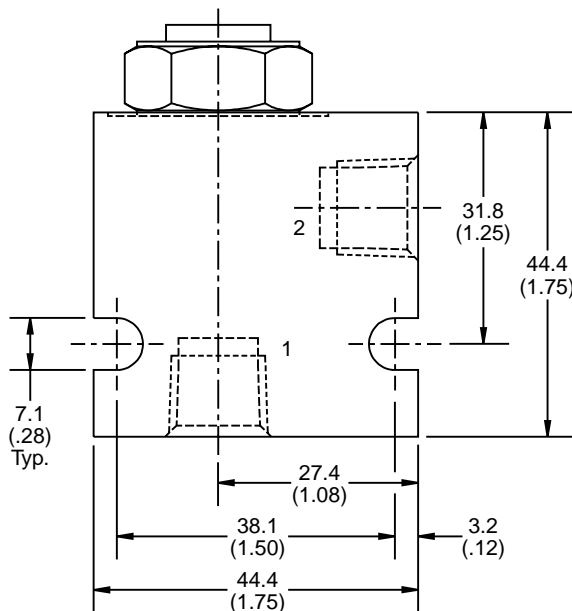


*Inch equivalents for millimeter dimensions are shown in (**)

Cartridge Only



Cartridge In Body



<div style="border: 1px solid black; padding: 5px; margin-bottom: 5px;">CVH</div> <div style="font-size: small;">5000 PSI Design Check Valve</div>	<div style="border: 1px solid black; width: 40px; height: 30px; margin-bottom: 5px;"></div> <div style="font-size: small;">Size</div>	<div style="border: 1px solid black; padding: 5px; margin-bottom: 5px;">1P</div> <div style="font-size: small;">Style</div>	<div style="border: 1px solid black; width: 40px; height: 30px; margin-bottom: 5px;"></div> <div style="font-size: small;">Cracking Pressure</div>	<div style="border: 1px solid black; width: 40px; height: 30px; margin-bottom: 5px;"></div> <div style="font-size: small;">Seals</div>	<div style="border: 1px solid black; width: 40px; height: 30px; margin-bottom: 5px;"></div> <div style="font-size: small;">Body Option</div>																																								
		<table border="1" style="width: 100%; border-collapse: collapse; font-size: x-small;"> <tr> <th style="width: 30%;">Code</th> <th>Style</th> </tr> <tr> <td>1P</td> <td>Guided Poppet</td> </tr> </table>	Code	Style	1P	Guided Poppet		<table border="1" style="width: 100%; border-collapse: collapse; font-size: x-small;"> <tr> <th style="width: 30%;">Code</th> <th>Type</th> </tr> <tr> <td>Omit</td> <td>Nitrile</td> </tr> <tr> <td>V</td> <td>Fluorocarbon</td> </tr> </table>	Code	Type	Omit	Nitrile	V	Fluorocarbon																															
Code	Style																																												
1P	Guided Poppet																																												
Code	Type																																												
Omit	Nitrile																																												
V	Fluorocarbon																																												
	<table border="1" style="width: 100%; border-collapse: collapse; font-size: x-small;"> <tr> <th style="width: 30%;">Code</th> <th>Type</th> </tr> <tr> <td>08</td> <td>3/4" - 16UNF-2B Threaded Cavity with .500" Dia. Seat</td> </tr> <tr> <td>09</td> <td>3/4" - 16UNF-2B Threaded Cavity with .625" Dia. Seat</td> </tr> </table>	Code	Type	08	3/4" - 16UNF-2B Threaded Cavity with .500" Dia. Seat	09	3/4" - 16UNF-2B Threaded Cavity with .625" Dia. Seat	<table border="1" style="width: 100%; border-collapse: collapse; font-size: x-small;"> <tr> <th style="width: 30%;">Code</th> <th>Type</th> </tr> <tr> <td>Omit</td> <td>0.3 Bar (5 PSI)</td> </tr> <tr> <td>10</td> <td>0.7 Bar (10 PSI)</td> </tr> <tr> <td>30</td> <td>2.1 Bar (30 PSI)</td> </tr> </table>	Code	Type	Omit	0.3 Bar (5 PSI)	10	0.7 Bar (10 PSI)	30	2.1 Bar (30 PSI)	<table border="1" style="width: 100%; border-collapse: collapse; font-size: x-small;"> <tr> <th style="width: 30%;">Code</th> <th>Port Size & Material</th> </tr> <tr> <td>Omit</td> <td>Cartridge Only</td> </tr> <tr> <td>4P</td> <td>1/4" NPTF (B**-2-4P) Steel</td> </tr> <tr> <td>A4P</td> <td>1/4" NPTF (B**-2-A4P) Aluminum</td> </tr> <tr> <td>6P</td> <td>3/8" NPTF (B**-2-6P) Steel</td> </tr> <tr> <td>A6P</td> <td>3/8" NPTF (B**-2-A6P) Aluminum</td> </tr> <tr> <td>4T</td> <td>SAE-4 (B**-2-4T) Steel</td> </tr> <tr> <td>A4T</td> <td>SAE-4 (B**-2-A4T) Aluminum</td> </tr> <tr> <td>6T</td> <td>SAE-6 (B**-2-6T) Steel</td> </tr> <tr> <td>A6T</td> <td>SAE-6 (B**-2-A6T) Aluminum</td> </tr> <tr> <td>4B</td> <td>1/4" BSPG (B**-2-4B) Steel</td> </tr> <tr> <td>A4B</td> <td>1/4" BSPG (B**-2-A4B) Aluminum</td> </tr> <tr> <td>6B</td> <td>3/8" BSPG (B**-2-6B) Steel</td> </tr> <tr> <td>A6B</td> <td>3/8" BSPG (B**-2-A6B) Aluminum</td> </tr> </table>	Code	Port Size & Material	Omit	Cartridge Only	4P	1/4" NPTF (B**-2-4P) Steel	A4P	1/4" NPTF (B**-2-A4P) Aluminum	6P	3/8" NPTF (B**-2-6P) Steel	A6P	3/8" NPTF (B**-2-A6P) Aluminum	4T	SAE-4 (B**-2-4T) Steel	A4T	SAE-4 (B**-2-A4T) Aluminum	6T	SAE-6 (B**-2-6T) Steel	A6T	SAE-6 (B**-2-A6T) Aluminum	4B	1/4" BSPG (B**-2-4B) Steel	A4B	1/4" BSPG (B**-2-A4B) Aluminum	6B	3/8" BSPG (B**-2-6B) Steel	A6B	3/8" BSPG (B**-2-A6B) Aluminum
Code	Type																																												
08	3/4" - 16UNF-2B Threaded Cavity with .500" Dia. Seat																																												
09	3/4" - 16UNF-2B Threaded Cavity with .625" Dia. Seat																																												
Code	Type																																												
Omit	0.3 Bar (5 PSI)																																												
10	0.7 Bar (10 PSI)																																												
30	2.1 Bar (30 PSI)																																												
Code	Port Size & Material																																												
Omit	Cartridge Only																																												
4P	1/4" NPTF (B**-2-4P) Steel																																												
A4P	1/4" NPTF (B**-2-A4P) Aluminum																																												
6P	3/8" NPTF (B**-2-6P) Steel																																												
A6P	3/8" NPTF (B**-2-A6P) Aluminum																																												
4T	SAE-4 (B**-2-4T) Steel																																												
A4T	SAE-4 (B**-2-A4T) Aluminum																																												
6T	SAE-6 (B**-2-6T) Steel																																												
A6T	SAE-6 (B**-2-A6T) Aluminum																																												
4B	1/4" BSPG (B**-2-4B) Steel																																												
A4B	1/4" BSPG (B**-2-A4B) Aluminum																																												
6B	3/8" BSPG (B**-2-6B) Steel																																												
A6B	3/8" BSPG (B**-2-A6B) Aluminum																																												

SERVICE PARTS

Nitrile Seal Kit:
CVH081P — SK08-2
CVH091P — SK09-2

Fluorocarbon Seal Kit:
CVH081P — SK08-2V
CVH091P — SK09-2V

** Specify size 08 or 09.

NOTE:
If system pressure does not exceed 210 Bar (3000 PSI), aluminum bodies can be used. Higher pressures require steel bodies.

Shipping Weight

Cartridge Only .10 kg (0.2 lbs.)
Cartridge in Body .21 kg (.45 lbs.)