

General Description

The CVH161P Series, Poppet-Type, Check Valves allow free flow in one direction while preventing flow in the reverse direction. They can be used to isolate portions of a hydraulic circuit or to provide a free flow path around a restrictive valve.

Operation

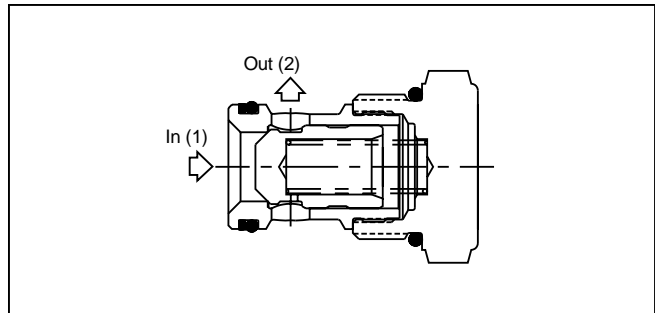
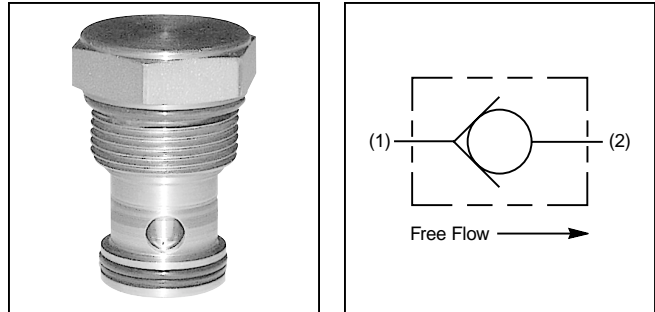
Pressure on the inlet of the check creates a force against the poppet, pushing it off its seat and permitting free flow. Reverse flow through the check is blocked by the poppet.

Features

- Hardened, precision ground parts for durability
- Compact size for reduced space requirements
- Low leakage design
- Fully guided poppet for smooth operation

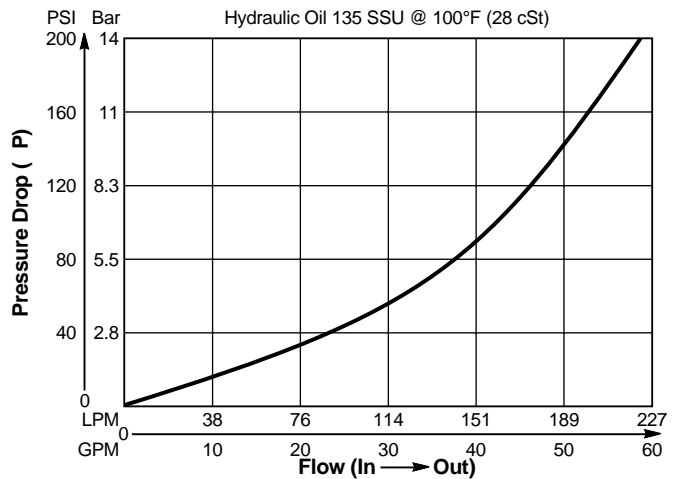
Specifications

Maximum Flow	225 LPM (60 GPM)
Maximum Inlet Pressure	345 Bar (5000 PSI)
Leakage	5 drops/min. (1/3 cc/min.) at 210 Bar (3000 PSI)
Operating Temp. Range (Ambient)	-40°C to +93.3°C (Nitrile) (-40°F to +200°F) -31.7°C to +121.1°C (Fluorocarbon) (-25°F to +250°F)
Cartridge Material	All parts steel. All operating parts hardened steel.
Body Material	Steel or Aluminum
Filtration	ISO code 16/13, SAE Class 4 or better
Mounting	No Restrictions
Cavity	Common Cavity No. C16-2

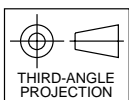
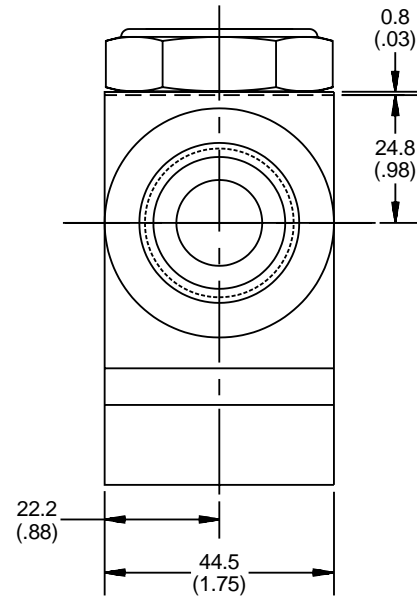
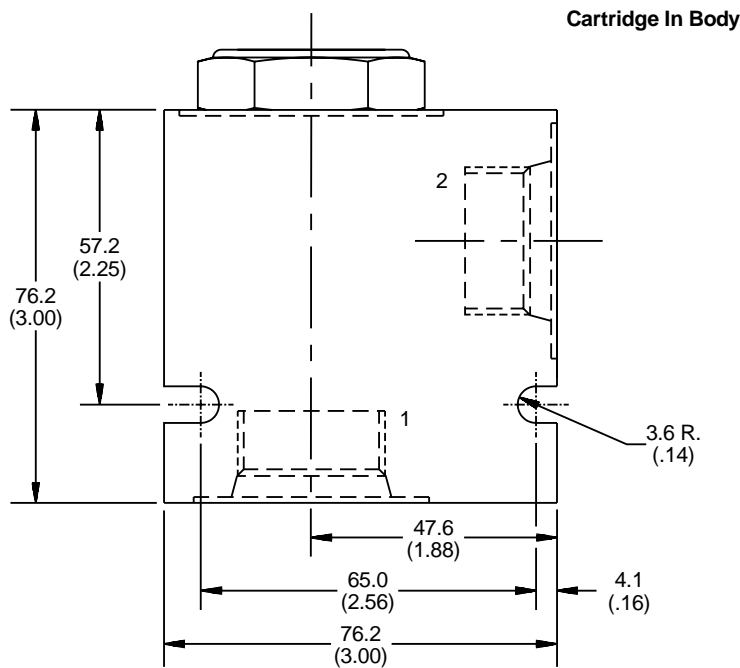
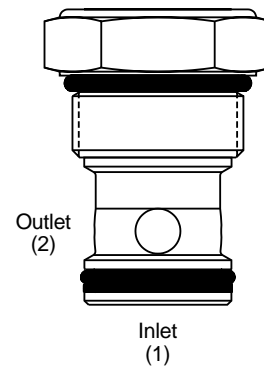
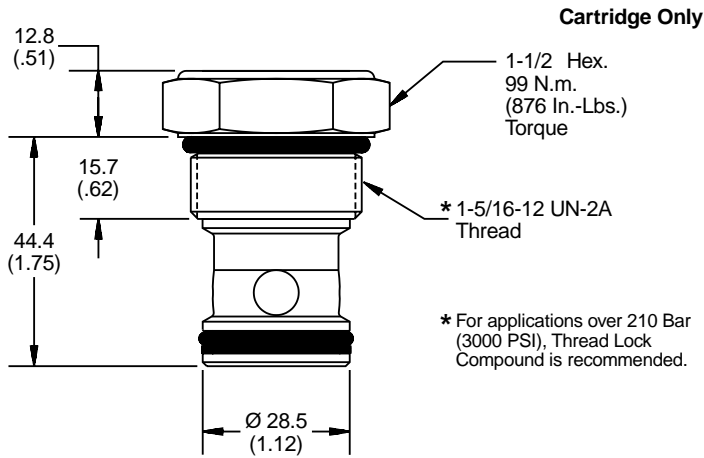


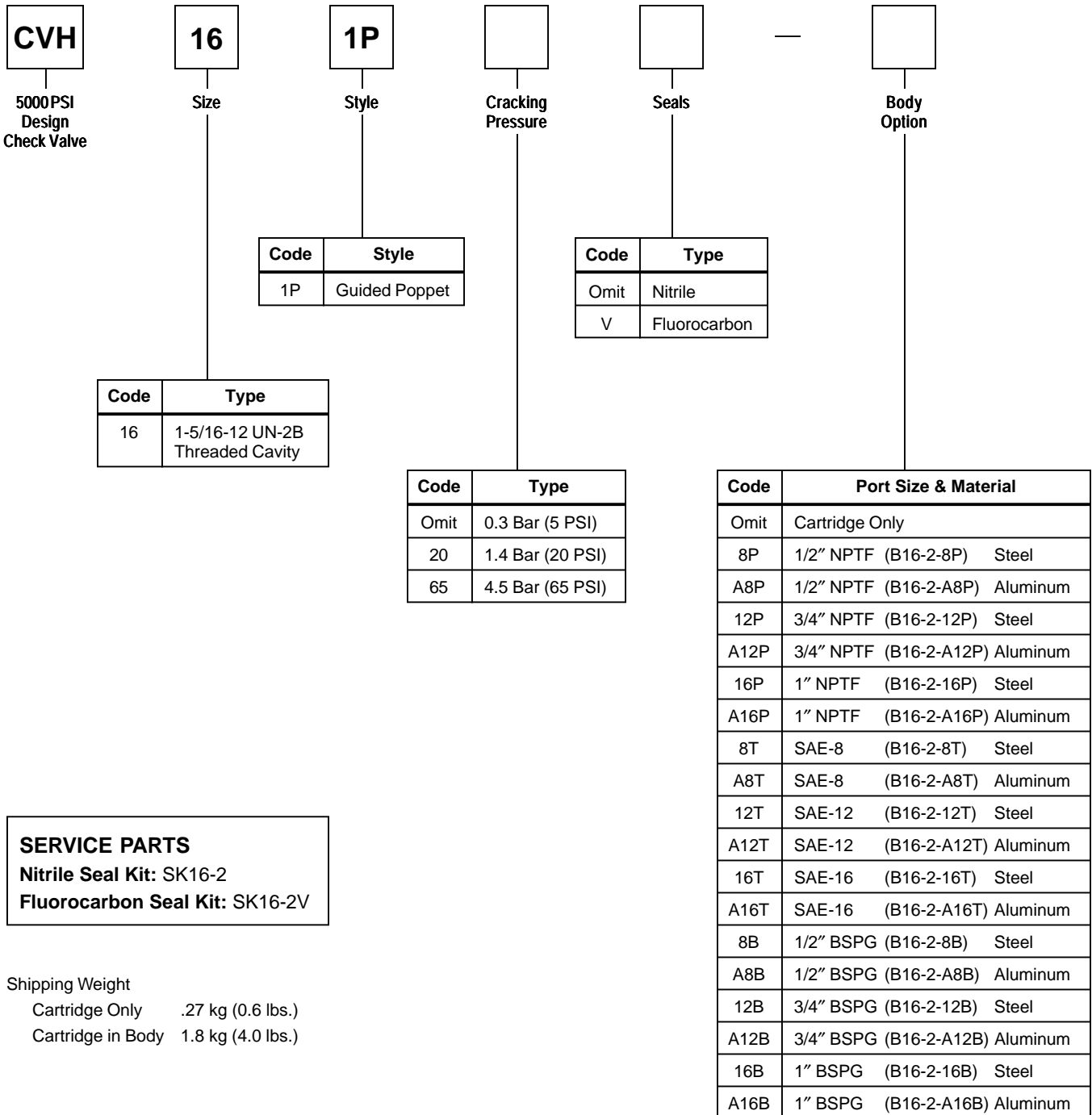
Performance Curve

Flow vs. Pressure Drop
 (Through cartridge only)



*Inch equivalents for millimeter dimensions are shown in (**)





SERVICE PARTS
Nitrile Seal Kit: SK16-2
Fluorocarbon Seal Kit: SK16-2V

Shipping Weight
 Cartridge Only .27 kg (0.6 lbs.)
 Cartridge in Body 1.8 kg (4.0 lbs.)

NOTE:
 If system pressure does not exceed 210 Bar (3000 PSI), aluminum bodies can be used. Higher pressures require steel bodies.