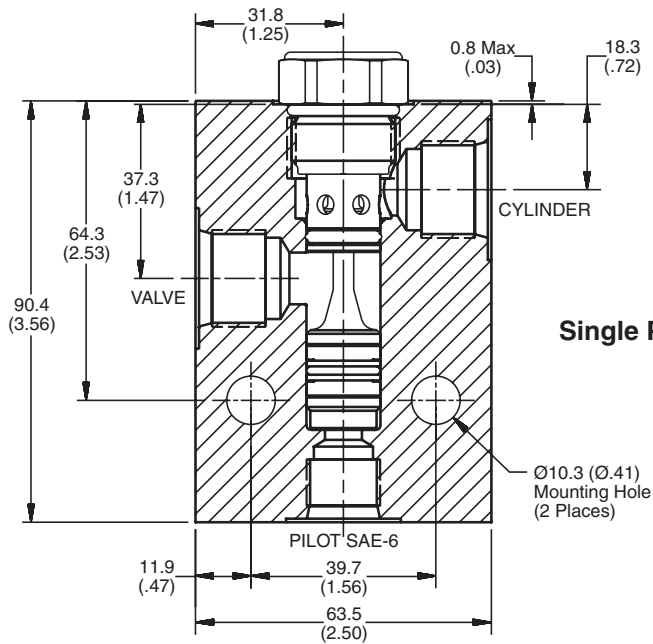


- CV** Check Valves
- SH** Shuttle Valves
- LM** Load/Motor Controls
- FC** Flow Controls
- PC** Pressure Controls
- LE** Logic Elements
- DC** Directional Controls
- MV** Manual Valves
- SV** Solenoid Valves
- PV** Proportional Valves
- CE** Coils & Electronics
- BC** Bodies & Cavities

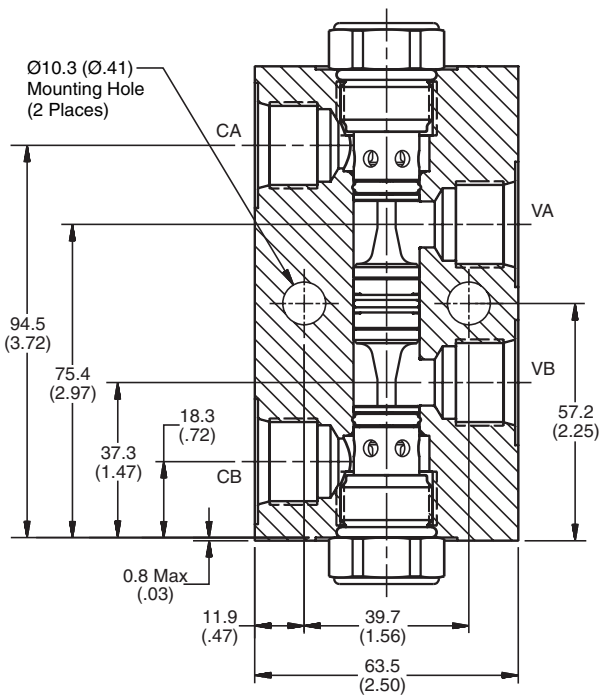
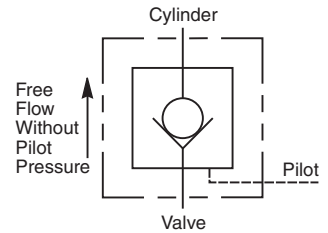
**Pilot Piston Assembly**

Dimensions Millimeters (Inches)



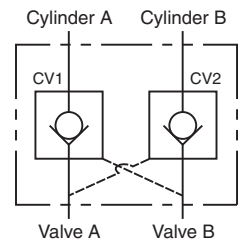
**Single Pilot Piston Assembly**

| Porting    |       |
|------------|-------|
| Pilot Port | SAE-6 |
| Work Ports | SAE-8 |



**Dual Pilot Piston Assembly**

| Porting    |       |
|------------|-------|
| Work Ports | SAE-8 |



| Model         | Pilot Ratio | Flow (GPM) | Max Inlet Pressure (PSI) | Crack Pressure (PSI) | Porting | Assembly                                |
|---------------|-------------|------------|--------------------------|----------------------|---------|---|
| CSPH103P-8T   | 4:1         | 16         | 5000                     | 5                    | SAE-8   | Complete Single Pilot Operated Assembly |
| CSPH103P20-8T | 4:1         | 16         | 5000                     | 20                   | SAE-8   |   |
| CDPH103P-8T   | 4:1         | 16         | 5000                     | 5                    | SAE-8   | Complete Dual Pilot Operated Assembly   |
| CDPH103A20-8T | 4:1         | 16         | 5000                     | 20                   | SAE-8   |   |