

# Engineered Gear Pump Systems & Services



Motion & Control · Filtration · Automation Solutions

## Wainbee Gear Pump Build Center in Winnipeg



Technical Expertise



Unsurpassed Customer Service



Wainbee Quality Assurance

Wainbee's capability to design and integrate the most efficient systems for your applications has kept us in the leading position in the Fluid Power Industry. In partnership with our quality suppliers, we bring the best practices and innovative solutions to our customers.

		Pump Series							
		20	031/030	051/050	076/075	315	330	350	365
Shaft End Cover Box 3	Pump CW With Outboard Bearing (4)	X	X	X	X	X	X	X	X
	Pump CCW With Outboard Bearing (5)	X	X	X	X	X	X	X	X
	Pump CW W/O Outboard Bearing (1)	X	X	X	X	X	X	X	X
	Pump CCW W/O Outboard Bearing (2)	X	X	X	X	X	X	X	X
	Pump Bi Rot W/O Outboard Bearing	X	X (030)	X(050)	X(075)				
	Pump Bi-Rot With Outboard Bearing	X	X (030)	X(050)	X(075)				
	Motor Bi-Rot With Outboard Bearing and 1/4" ODT Drain (8)	X	X	X	X		X	X	X
	Motor Bi-Rot W/O Outboard Bearing and 1/4" ODT Drain (9)	X	X	X	X	X	X	X	X
Shaft End Cover Box 4	SAE 2 Bolt For Clutch (89)					X			
	4 bolt 72X100mm, 80mm pilot (90)					X	X		
	SAE A 2 Bolt (93)	X	X	X		X	X		
	Pad Mount for Clutch					X			
	SAE B 2 Bolt	X	X	X		X	X	X	X
	SAE B 4 Bolt	X	X	X	X		X	X	X
	SAE C 4 Bolt		X	X	X		X	X	X
	SAE C 2 Bolt			X	X			X	X
	SAE B 2/4 Bolt	X						X	
	SAE D 4 Bolt				X				
	6 Bolt Flange 3.25 BC 2 5/8" pilot	X	X	X					
	SAE B 2 Bolt Type 2 N/A with O.B. Bearing	X	X						
	SAE C 2 Bolt Type 2 Pilot Dia 5								
	Pad Mount (00)	X	X	X					
	Piggyback Mount 4" pilot Dia 030-030, & 050-030		X						
	Piggyback Mount 5" Pilot Dia 075-030		X						
	Piggyback Mount 4" Pilot Dia 050-050			X					
	Piggyback Mount 5" Pilot Dia 075-050			X					
	4 Bolt Cloverleaf (27)	X							

# Parker's Fixed Displacement Gear Pumps - High Performance and Endurance

## PGP 020

- Three-piece cast iron construction for distribution flexibility
- Durable high-strength cast iron body for excellent power to weight ratio
- Cast Iron construction for durability
- Balanced Thrust Plates minimize friction and leakage
- Roller bearings for durability
- Multiple sections available

## PGP030/031/050/051/075/076™ Series

- Three-piece cast iron construction for distribution flexibility
- Cast Iron construction for durability
- Balanced Thrust Plates minimize friction and leakage
- Roller bearings for durability
- Multiple sections available

## PGP 300 Series

- Three-piece cast iron construction for distribution flexibility
- Cast Iron construction for durability
- Balanced Thrust Plates minimize friction and leakage
- Journal bearings for long life
- Multiple sections available



PGP20



PGP031



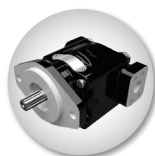
PGP051



PGP076



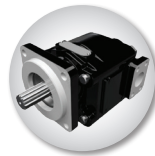
PGP315



PGP330



PGP350



PGP365

		Pump Series							
		20	031/030	051/050	076/075	315	330	350	365
Drive Shaft Box 8	SAE A Spline (96)					X			
	SAE A Keyed (97)					X			
	SAE B Spline (65)	X	X	X		X			
	SAE B Keyed (66)	X	X			X			
	SAE B Keyed Type 2 (67)	X							
	SAE BB Spline (98)	X	X	X			X	X	
	SAE BB Keyed (43)	X	X	X			X	X	
	SAE B Spline (25)	X	X	X			X	X	X
	SAE B Keyed (30)	X	X				X		
	SAE C Spline(Two Piece) (7)	X	X	X	X		X	X	X
	SAE C Keyed (11)			X	X			X	X
	SAE B Keyed and Threaded ANSI 22-2 (15)	X							
	SAE C Keyed Long (73)			X				X	
	.750 Dia Keyed (two Piece Cont.) (12)	X	X						
	SAE C Spline Type 2 (53)			X					
	SAE BB Keyed Type 2 (67)			X					
	Piggyback 030-030 (14)		X						
	Piggyback 050-030 (22)		X						
	Piggyback 075-030 (23)		X						
	Piggyback 050-050 (22)			X					
	Piggyback 075-050 (23)			X					
	Clutch Pump Shaft (32)	X							
	Shaft (15) Modified (90)	X							
	SAE A Spline ANSI 16-4 (95)	X							
	1.00 Dia Spline 6 Tooth (68)	X							



1-888-WAINBEE (924-6233) | [salesinfo@wainbee.com](mailto:salesinfo@wainbee.com) | [WAINBEE.com](http://WAINBEE.com)